

STRASBOURG

FAMILICITI - PRACTICAL GUIDE

IDEAL FOR FAMILY OUTINGS!

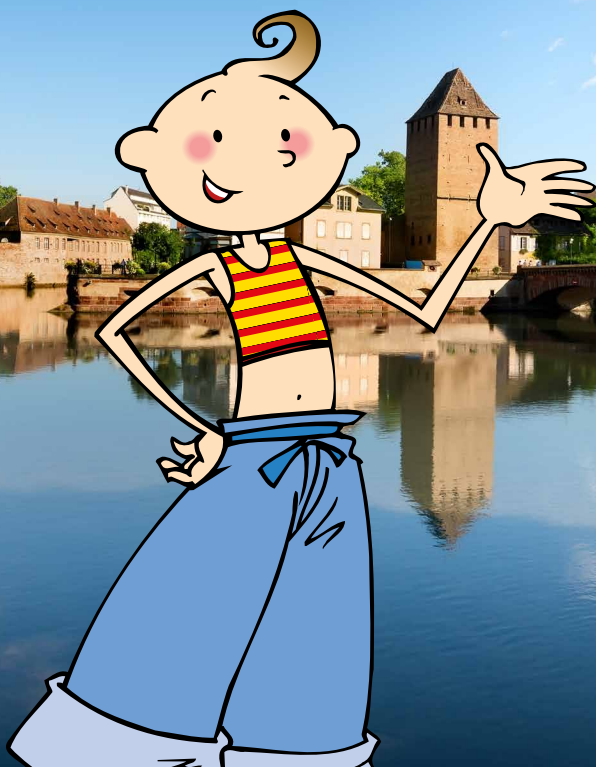
EN



OFFICE
DE TOURISME
DE STRASBOURG
ET SA RÉGION



STRASBOURG
GRANDE ÎLE
& NEUSTADT
PATRIMOINE
MONDIAL
WORLD HERITAGE





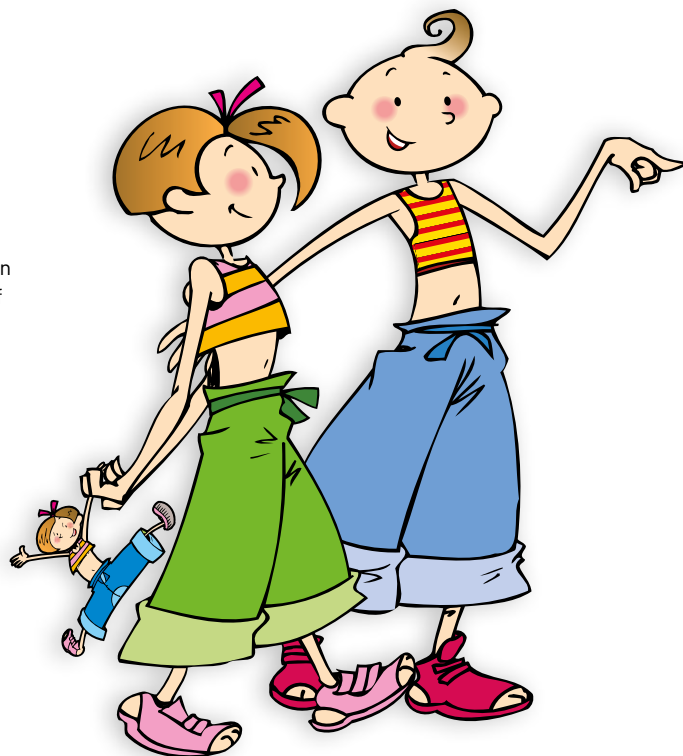
A FAMILY TRIP TO STRASBOURG IS A FABULOUS WAY FOR EVERYONE TO GET TO KNOW THE CITY.

A simple stroll through the pedestrian streets of the old town around the cathedral, enjoying the wealth of tourist attractions is a real pleasure.

But Strasbourg has even more treasures in store for visiting families: a wide variety of recreational activities for the whole family to enjoy.

Whether observing the stars or taking a bike ride, climbing up to the Cathedral platform or taking part in a mini treasure hunt in the city centre, learning about ant communities or taking an audio-guided tour... there's something to suit everyone's tastes!

**Strasbourg, a dream destination
for the family!**



> CONTENTS

STRASBOURG PASS 4

MUSEUMS 5-9

TOURS 10-12

A climb up to the Cathedral platform
The Cathedral's Astronomical Clock
Le Vaisseau
The "Petite France" district and the panoramic terrace Vauban dam
The Planetarium

WALKS AND RIDES 13-16

Pleasure boat
Mini-train
Cycling
Pedicab
Segway
Familitirali
Walking tour of Strasbourg

LITTLE EXTRAS 17-19

Audio-guided tour
The European Institutions district
The historic wine-cellar of the Strasbourg Hospital
The MM Park

PARKS 20-22

LEISURE ACTIVITIES 23-26

Museum "Les Secrets du Chocolat"
Orangerie bowling alley
Swimming pools
Iceberg skating rink
Natura Parc
Friedel wildlifze park

USEFUL AMENITIES 27

STRASBOURG PASS AND STRASBOURG PASS JUNIOR: SPEND LESS TO SEE MORE!

**WE GAVE YOU THE STRASBOURG PASS,
NOW DISCOVER THE STRASBOURG PASS
JUNIOR FOR CHILDREN AGED 4 TO 17!**

Just like the "adult" version, it is a discount
voucher book, valid for 3 days and available
from the Tourist Office.

Both passes enable families to visit a wide
range of sites at discounted prices.

The Strasbourg Pass Junior includes:

5 FREE OFFERS:

- A tour of any museum
- A climb up to the cathedral platform
- A ride on a pleasure boat
- Admission to the cathedral's
astronomical clock
- A mini treasure hunt in the city centre
with the "Familititali"

4 HALF-PRICE OFFERS:

- A mini-train tour of the city
(from April to October)
- Admission to le Vaisseau
- Guided visit (according to the programme)
- The audio-guided tour

LITTLE EXTRAS, E.G.:

- Reduction on the visit of the museum
"Les secrets du chocolat"
- Reduction on the visit of the
"Château Vodou"
- Reduction on a unusual discovery of
Strasbourg in Segway
- 20% discount on certain items sold
by the Tourist Office, place de la Cathédrale



OFFICE DE TOURISME DE STRASBOURG ET SA RÉGION

17, place de la Cathédrale
Tél. +33 3 88 52 28 28
Fax +33 3 88 52 28 29
e-mail: info@otstrasbourg.fr
www.otstrasbourg.fr

STRASBOURG BOASTS 10 MUSEUMS... SOMETHING FOR EVERYONE!

FREE ADMISSION FOR EVERYONE ON THE FIRST SUNDAY OF THE MONTH
AND FOR CHILDREN AT ANY TIME!

With its 10 prestigious museums and the Aubette 1928, the City of Strasbourg has long strived to
make this fabulous cultural heritage accessible to the wider public.
With special events and facilities specifically geared towards children and families,
the Strasbourg museums are determined to introduce both children and adults to their world of
treasures the fun way!



L'AUBETTE 1928

Did you know that you can visit a work of
modern art located right on place Kléber?
Explore this former avant-garde leisure
complex, which once featured a cinema/
dance hall, a café-bar where you could have
a drink during a showing, and an impressive
community hall. Experience the simple
shapes and colours surrounding you, with
each pace following a different rhythm.



PRACTICAL INFO

Opening hours:

Wed.-Sat.: 2 p.m.-6 p.m.

Free entry for all

Place Kléber

+33 3 68 98 51 54

www.musees.strasbourg.eu



ZOOLOGICAL MUSEUM

Ambling through the vast galleries of the Zoological Museum, the imagination runs wild. Naturalists are in their element; children stand and stare. Granted, it's a rather unusual way of discovering extinct species, but it's also a journey to the four corners of the earth in search of fabulous beasts.



PRACTICAL INFO

Opening hours: Mon.-Sun.: 10 a.m.-6 p.m.
Closed on Tuesdays

Free: under 18's
29, boulevard de la Victoire
+33 3 68 85 04 89
www.musees.strasbourg.eu

**TAKE
NOTE!**

Closed for renovation from August 2019
to June 2022.



PALAIS ROHAN

DECORATIVE ARTS MUSEUM

In this 18th century palace, you can walk through the former living quarters of the king and the princebishop. Why not play princes and princesses during your visit? At the end of the museum, you can even see impressive time keeping items (including the cockerel, said to be the oldest automatic device in the world), and a large collection of old mechanical toys given to the museum by Tomi Ungerer.

ARCHAEOLOGICAL MUSEUM

Did you know that in Alsace, right underneath our feet, there are treasures more than 600 000 years old? Set off on a journey of discovery of Alsace's most distant past, from the Prehistoric era to the dawn of the Middle Ages, and get to know our ancestors by exploring the objects they used in their daily lives.

FINE ARTS MUSEUM

Do you know "La Belle Strasbourgeoise"? She has an extraordinary black hat on her head! Come and meet her and admire her portrait alongside other masterpieces of the museum, painted by some of the greatest artists of the past.



PRACTICAL INFO

Opening hours:
Mon.-Sun.: 10 a.m.-6 p.m.
Closed on Tuesdays - **Free:** under 18's
2, place du Château - +33 3 68 98 51 60
www.musees.strasbourg.eu

**TAKE
NOTE!**

From September 2018 to August 2019, significant safety works will affect opening hours of the three museums of the Palais Rohan. More information on the museums' website.

ALSATIAN MUSEUM

What was life like in Alsace 250 years ago? What did houses look like in Alsace in times gone by? How did we heat our homes? What did wedding dresses look like?

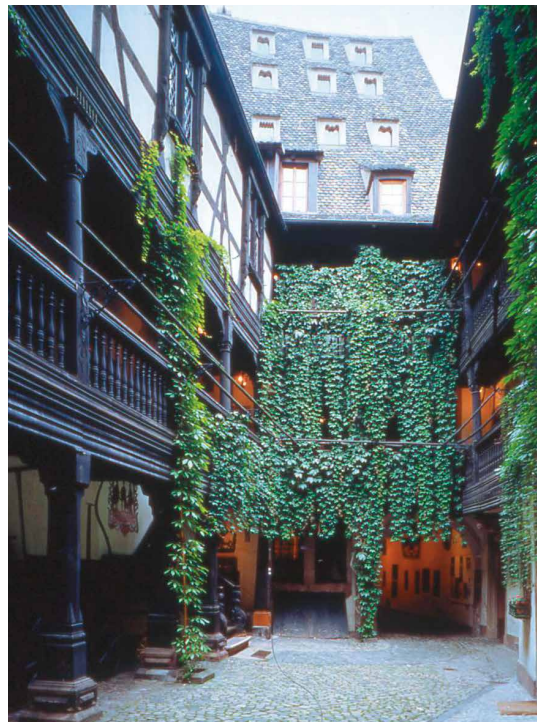
A delightful wander through three old Strasbourg houses will give you the answers to all of these questions.



PRACTICAL INFO

Opening hours: Mon.-Sun.: 10 a.m.-6 p.m.
Closed on Tuesdays

Free: under 18's
23-25, quai St-Nicolas
+33 3 68 98 51 54
www.musees.strasbourg.eu





ŒUVRE NOTRE-DAME MUSEUM

Have you ever heard about a devil covered in toads and snakes?
Do you believe in angels? How many years did it take to build the cathedral?

To find out about the fantastic and mysterious universe of the Middle Ages, visit the Œuvre Notre-Dame Museum.



PRACTICAL INFO

Opening hours: Tue.-Sun.: 10 a.m.-6 p.m.
Closed on Mondays
Free: under 18's
3, place du Château
+33 3 68 98 51 54
www.musees.strasbourg.eu



HISTORICAL MUSEUM

Through a fun and interactive journey, this museum displays the city's history from the Middle Ages up to the year 1949.

You can touch the objects on display, ring a cast-iron bell and even try on an authentic helmet used as battle armour.
A real journey through time!



PRACTICAL INFO

Opening hours: Tue.-Sun.: 10 a.m.-6 p.m.
Closed on Mondays
Free: under 18's
2, rue du Vieux-Marché-aux-Poissons
+33 3 68 98 51 54
www.musees.strasbourg.eu

MUSEUM OF MODERN AND CONTEMPORARY ART

Have you ever seen a genuine Monet or Picasso painting, or an enormous sculpture made of 18 small wooden houses?

Would you like to know what artists are creating nowadays? Visit the Museum of Modern and Contemporary Art, an amazing, light and pleasant building.



PRACTICAL INFO

Opening hours: Tue.-Sun.: 10 a.m.-6 p.m.
Closed on Mondays
Free: under 18's
1, place Hans-Jean Arp
+33 3 68 98 51 54
www.musees.strasbourg.eu



TOMI UNGERER MUSEUM

Do you know about the "enfant terrible" of Strasbourg? He's quite a rascal, but he's very talented at drawing! Get to know the famous, crazy illustrator in the museum dedicated to him; look at hundreds of pictures - including many illustrations for children's books - which tell a thousand stories...

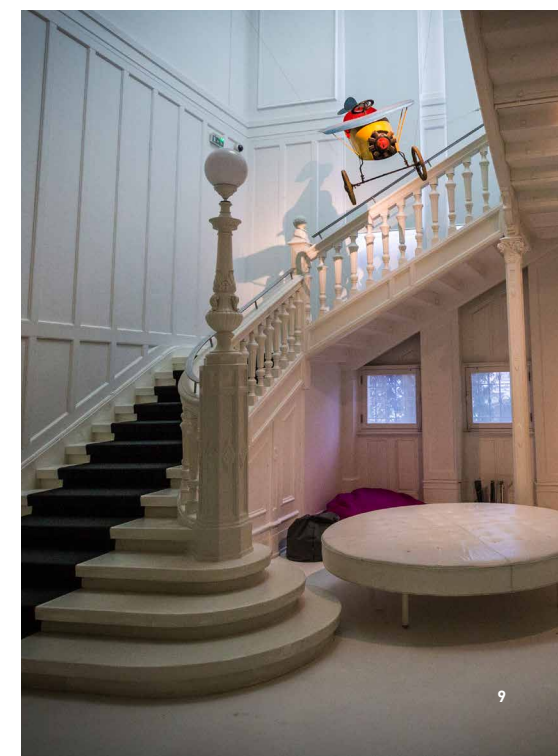


PRACTICAL INFO

Opening hours: Mon.-Sun.: 10 a.m.-6 p.m.
Closed on Tuesdays
Free: under 18's
Villa Greiner - 2, av. de la Marseillaise
+33 3 68 98 51 54
www.musees.strasbourg.eu

EXTRA

Reading room: Free comic books to share the pleasure of a story with your family.





FREE
WITH THE
STRASBOURG
PASS
JUNIOR

A CLIMB UP TO THE CATHEDRAL PLATFORM

The Cathedral spire stands **142 metres** high. **The platform** is not quite as high, but it still takes 332 steps to get up there... not recommended for anyone scared of heights! Splendid views of the city and the nearby Vosges Mountains. Simply fabulous!



PRACTICAL INFO

Opening hours: daily April-September: 9.30 a.m. - 8 p.m. - October-March: 10 a.m. - 6 p.m. Closed on 1 May, 25 Dec. and 1 Jan.

Reduced price: children aged 5-18

Free: Strasbourg Pass Junior holders and under 5's

Free for everyone on the first Sunday of the month.

Place de la Cathédrale - +33 3 68 98 51 42

TAKE
NOTE!

Closed for renovation from October 2018 to March 2019.

THE CATHEDRAL'S ASTRONOMICAL CLOCK

Meeting at **noon** in front of the **cathedral's Astronomical Clock**.

After a film show on the clock, at 12.30 p.m. on the dot, everything is set in motion: the 12 Apostles file past Jesus who blesses them. Right at the top of the clock, the cock crows three times... Not to be missed!

EXTRA

Film on the Astronomical clock: Mon.-Sat. from 11.30 a.m. (Make sure you arrive before 12 noon).

FREE
WITH THE
STRASBOURG
PASS
JUNIOR



PRACTICAL INFO

Opening hours: Except Sundays and bank holidays. Tickets for sale at the postcard stand: 9.30 a.m.-11 a.m. and at the south cash desk: 11.30 a.m.-12.15 p.m.

Free: under 6's, Strasbourg Pass Junior holders. Place de la Cathédrale www.cathedrale-strasbourg.fr



-50%
WITH THE
STRASBOURG
PASS
JUNIOR

LE VAISSEAU

Located at the entrance to the city, the Vaisseau is a fun way for the family to get to grips with science and technology. Set in welcoming and vibrant surroundings and covering 4 200 m², the centre houses 7 universes in the permanent exhibitions (Being Human / The animals / I build / Water / The garden / Log'hic² / Log'oh).

TAKE
NOTE!

An auditorium with **live shows and 3D films**

EXTRA

→ 60% of the museum boasts **interactive facilities**
→ A **baby-feeding area**
→ Access **for reduced mobility visitors**



PRACTICAL INFO

Opening hours: Tue.-Sun. and public holidays: 10 a.m.-6 p.m. (Ticket office closes at 5 p.m.). Closed on Monday.

Careful! Closed annually during the first 3 weeks of September, on 1 January, 1 May and 25 December.

Reduced price: under 18's
Family day pass (4 people)

Half price: Strasbourg Pass Junior holders

Free: under 3's
1 bis, rue Philippe Dollinger
+33 3 69 33 26 69
www.levaisseau.com



FREE

THE PETITE FRANCE DISTRICT AND THE PANORAMIC TERRACE OF THE VAUBAN DAM

The Petite France quarter has many surprises in store for young explorers. Apart from its narrow cobbled streets and its picturesque half-timbered houses which remind us of the setting of a children's fairy tale, we can admire a lock where boats slowly rise, alongside a fun swing bridge which allows boats to pass.

At the end of this quarter is the Barrage Vauban. Built on the basis of Vauban's plans after the reunification of Strasbourg with France in 1681, it was intended to strengthen medieval fortifications, which had become obsolete. Underneath the 13 arches of this bridge, mobile iron panels allowed, in the event of an attack, the flooding of the southern part of the city, making it impassable to the enemy.



PRACTICAL INFO

Opening hours: daily, times may change according to the season.

EXTRA

Amateur photographers have the possibility to practice their skills on the panoramic terrace, since it offers a magnificent view on the Petite France quarter.



THE PLANETARIUM

With its large dome housing France's third biggest telescope and its magnificent garden, the Planetarium is a fabulous place for learning about astronomy and observing the skies. The planetarium's wide range of dynamic exhibits gives everyone the chance to learn about the stars, while having fun at the same time.

Star Crypt

The crypt houses an exhibition of old scientific instruments, image walls and multimedia terminals. Have fun conducting experiments and discovering the latest findings in the field of astrophysics.

Planetarium sessions

Specially designed shows that initiate the public to the secrets of our universe.

Guided tour of the Observatory dome

An amazing 34-ton telescope with a 487 mm lens!

Night visits

Skywatching sessions (see programme on their website).



PRACTICAL INFO

Opening hours:

Closed on Saturdays, public holidays.

Reservation required: +33 3 68 85 24 50

Reduced price: under 14's

Free: under 4's

13, rue de l'Observatoire

www.planetarium.unistra.fr



WALKS AND RIDES



FREE
WITH THE
STRASBOURG
PASS
JUNIOR

PLEASURE BOAT

Get to know Strasbourg by pleasure boat, it's really cool!

The boat takes visitors right around the old town, passes through the lock in Petite France and sails past the imposing and solemn buildings of the European institutions.

A classic ride, very popular with visitors.

EXTRA

Captain **Hans Trapp**, honorary pirate, and his parrot Coco, teach apprentice cabin boys about the city. All aboard me hearties!



PRACTICAL INFO

Ticket sales: Batorama shop, 18, place de la Cathédrale (or online).

Departure: landing-stage Palais Rohan, place du marché-aux-poissons

Daily departures all year round (except during high waters)

Reduced price: children aged 4-12

Free: Strasbourg Pass Junior holders and under 4's.

info@batorama.com

www.batorama.com





-50%
WITH THE
**STRASBOURG
PASS
JUNIOR**

MINI-TRAIN

Strasbourg's mini-train takes the whole family on a fun ride through the heart of the Alsatian capital, letting them discover typical quarters, narrow alleyways, Petite France and the Covered Bridges. A commentary gives further insight into the city's history.

Enjoy your ride!



PRACTICAL INFO

Departures:

Every day, from mid March to mid November.

Tour lasts 40 minutes.

Reduced price: children aged 6-14,

Strasbourg Pass Junior holders

Place de la Cathédrale, North side

+33 3 89 73 74 24 - www.petit-train-strasbourg.fr



DISCOUNT
WITH THE
**STRASBOURG
PASS
JUNIOR**

THE PEDICAB

Be transported through the backstreets of Strasbourg's Old Town with a fun, personalised tour in a pedicab.



PRACTICAL INFO

Cyclorama

www.cyclorama-strasbourg.com

Upon reservation: +33 6 16 56 22 62

Vélistimo

With or without reservation:

+33 7 86 60 71 04

or velissimostras@gmail.com

CYCLING

560 km of cycle trails, a record in France!

Why not have a little ride through the historical and pedestrian city centre, along the canals, through the parks and gardens or into the surrounding countryside, following the Forts Trails? A different way for families to get to know the city!



PRACTICAL INFO

Esprit Cycles

138, avenue de Colmar

+33 3 88 36 18 41

www.espritlecycles.com

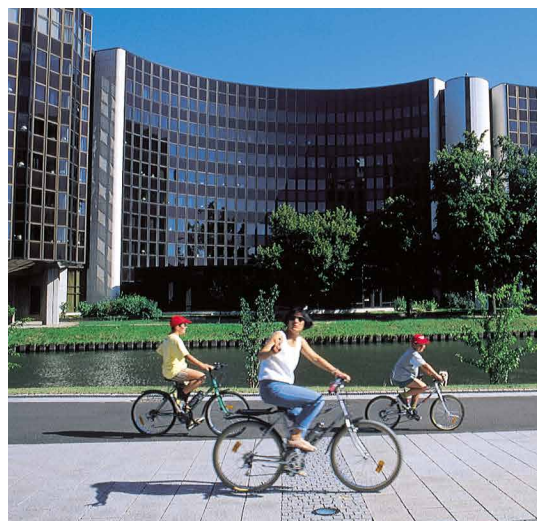
Vél'hop

Gare SNCF - +33 9 60 17 74 63

3, rue d'Or - +33 9 65 27 97 25

23, bd. de la Victoire - +33 9 62 32 06 46

www.velhop.strasbourg.fr



Le Maquis Bicycle café

10, place d'Austerlitz

+33 9 87 00 75 54

www.cafevelo-lemaquis.fr

THE SEGWAY

Step on and your instincts take over.

Visit Strasbourg and its historical city center in an original and playful way...



PRACTICAL INFO

Mobilboard Strasbourg

Segway Tours

www.mobilboard.com/strasbourg

16, rue d'Austerlitz

For information and booking:

+33 3 67 10 33 04

strasbourg@mobilboard.com

One City Tours

www.onecity-tours.com

5, petite rue du Vieux-Marché-aux-Vins

For information and booking:

+33 9 84 46 39 24

info@onecity-tours.com

DISCOUNT
WITH THE
**STRASBOURG
PASS
JUNIOR**





FREE

THE FAMILICITIRALI

What do you see when you look up at the cathedral facade? What's that bird occupying pride of place in the middle? 6 questions to test whether you've seen absolutely everything, from the Cathedral to the Pont du Corbeau. An intelligent and fun way of discovering little oddities about Strasbourg!



PRACTICAL INFO

The booklet is available from the Tourist Office, all year round.
Office de Tourisme - 17, place de la Cathédrale
+33 3 88 52 28 28 - www.otstrasbourg.fr

WALKING TOUR OF STRASBOURG

Enjoy a walking tour through the city's old districts with your family.

After walking around the cathedral, searching for all kinds of medieval creatures and figures that decorate the façades, enjoy discovering the narrow streets and the half-timbered houses of the «Petite France», where fishermen, millers and tanners worked and lived in days gone by.

Following the canals, head for the towers of the "Ponts Couverts" (the Covered Bridges), where prisoners were once held, to reach the "Barrage Vauban" (the Vauban Dam) and its panoramic terrace, where you can enjoy an impressive view over the town and its canals.

-50%
WITH THE
STRASBOURG
PASS
JUNIOR



PRACTICAL INFO

Departures: May, June, September, October and December: 3 p.m.
Duration: 1.30 hour
Reduced price: children aged 12-18, Strasbourg Pass Junior holders
Free: under 12's
Office de Tourisme
17, place de la Cathédrale
+33 3 88 52 28 28 - www.otstrasbourg.fr

> LITTLE EXTRAS



-50%
WITH THE
STRASBOURG
PASS
JUNIOR

AUDIO-GUIDED TOUR

With the Strasbourg audioguided tour, all the family needs is an audio-guide and a map of the route to discover the treasures of the Cathedral and the old town...

They can set their own place and learn about the city's history in their own time. Great fun for all!



PRACTICAL INFO

Available all year round: 9 a.m.-4 p.m.
Reduced price: children aged 12-18, Strasbourg Pass Junior holders
Free: under 12's
Office de Tourisme
Place de la Cathédrale
+33 3 88 52 28 28 - www.otstrasbourg.fr



THE EUROPEAN INSTITUTIONS DISTRICT

A stone's throw away from the Orangerie, discover the imposing buildings of this quarter: **the European Parliament** with its huge glass façade, **the Palais de l'Europe**, an enormous quadrilateral structure and **the Human Right's Building** with its bold architecture. A wholly contemporary area within the city. A must-see for all European citizens of the future.

EXTRA

The Lieu d'Europe assists European youth in better understanding European institutions through numerous exhibitions and activities.



PRACTICAL INFO

Visitors are admitted to the European Parliament and to the Council of Europe.

→ Council of Europe:

Closed on weekends and public holidays.

Booking required: +33 3 88 41 20 29

visites@coe.int - www.coe.int

→ European Parliament:

Information: www.europarl.europa.eu/visiting/en

→ Lieu d'Europe:

Tue.-Fri.: 10 a.m.-6 p.m.

8, rue Boecklin

+33 3 68 00 09 10

www.lieudeurope.strasbourg.eu



THE HISTORIC WINE-CELLAR OF THE STRASBOURG HOSPITAL

Founded in 1395, this building bears witness to a renowned hospital wine-producing history, full of mystery.

Amazing treasures can be found in its vaults, including several masterpieces of cooperage and a variety of wine dating from 1472, the oldest barrel of wine in the world!



PRACTICAL INFO

Opening hours:

Mon.-Fri.: 8.30 a.m.-noon

and 1.30 p.m.-5.30 p.m.

Sat.: 9 a.m.-12.30 p.m.

Free admission

1, place de l'Hôpital

+33 3 88 11 64 50

www.vins-des-hospices-de-strasbourg.fr



THE MM PARK

Located 12 km north of Strasbourg, this original concept will allow the whole family to learn and discover while having a good time. With an area of more than 7,000 m², this collection, which is unique in Europe, gathers more than one hundred vehicles and tanks and hundreds of uniforms and weapons from World War II.



PRACTICAL INFO

Opening hours:

Exhibition: every day from 9 a.m. to 7 p.m.

Game area and bar:

Mon.-Fri.: 11 a.m.-7 p.m.

Sat. and Sun. 9 a.m.-7 p.m.

Free: under 5's.

Reduced price: under 18's.

4, rue Gutenberg - 67610 La Wantzenau

+33 3 88 59 25 43

www.mmpark.fr



Put your skills and nerves to the test on flight simulators, at the shooting range or at the "fighter's course" (the treetop adventure course).

Attractions are not included in the entry fee to the museum.

WHILE EACH OF THE CITY'S QUARTERS HAS ITS OWN QUAIN TITTLE PARKS AND PLEASANT PLAYGROUNDS,

THERE ARE NEVERTHELESS SOME EXCEPTIONAL ONES THAT DESERVE OUR SPECIAL ATTENTION.



THE ORANGERIE PARK

With its incredible vegetation, its lake, its boats and its waterfall, its storks, its little zoo, its games, its mini-farm and its carousel, the Orangerie is a popular meeting place for joggers, walkers and families. It is also a welcome oasis during the hot summer months and a children's paradise.

The Empress Josephine, wife of Napoleon I, loved strolling through this park. The lodge in the middle of the park is actually named after her. 26 hectares of nature for relaxing, strolling, picnicking, admiring cheeky monkeys, majestic lynxes and mischievous llamas!

A favourite with the locals, old and young alike.



PRACTICAL INFO

Opening hours: daily, round the clock
Free admission to park and mini-zoo
Avenue de l'Europe

TAKE
NOTE!

The mini-farm is open on
Wednesdays, Saturdays, Sundays,
and daily during the region's
school holidays from 2 p.m.
to 6 p.m.

Reduced price: children over 4
Free: under 4's

CITADELLE PARK

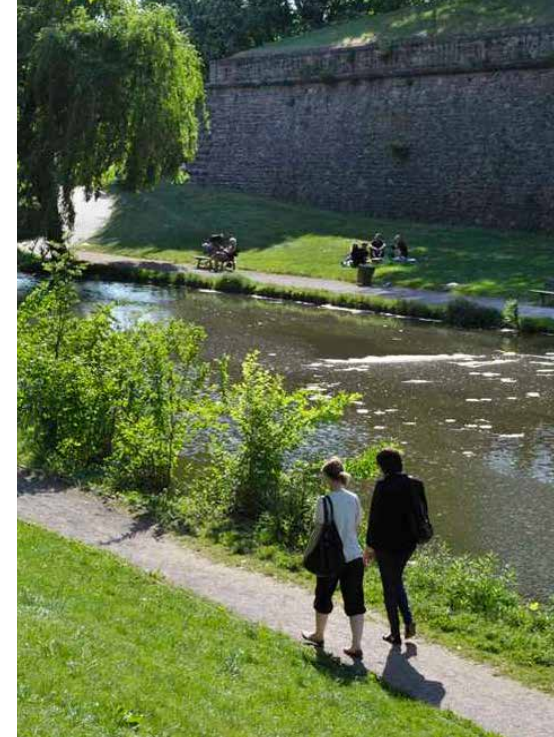
Located in the Esplanade quarter, not far from the university campus, the Citadelle Park is favoured by students, who go there to study or relax.

Built by Vauban in the years following 1681 and partially destroyed in 1870, the ramparts now mark the boundaries of a magnificent space punctuated by playgrounds and waterways, where children and adults come to relax or let off steam... much to the amusement of the ducks!



PRACTICAL INFO

Opening hours: daily, round the clock
Free admission
Quai des Belges



TWO SHORES GARDEN

A symbol of Franco-German friendship, this cross-border park boasts a footbridge for pedestrians and bikers that links Strasbourg to the town of Kehl in Germany. From the top of this central structure, there is a magnificent view over the Rhine. This border-free garden hosts plant exhibitions and cultural events, with facilities for children to enjoy throughout the year.



PRACTICAL INFO

Opening hours:
Summer: daily, 6 a.m. to midnight
Winter: daily, 6 a.m.-9 p.m.
Free admission
Avenue du Pont de l'Europe





> LEISURE ACTIVITIES

BOTANICAL GARDEN

An amazing oasis in the heart of the city, the Botanical Garden is a favourite among students, families and walkers. Covering an area of almost 3.5 hectares, this living museum is home to more than 6,000 different tree and plant species, including a few experimental flower beds specially planted for research purposes.

The tropical hothouse, which covers an area of 336 m² and is teeming with rare and lush vegetation including treasures such as a traveler's tree, a giant bamboo and a fiddle leaf fig, etc.

The Bary hothouse: this listed building with its giant Amazon water lilies is the only remnant of the original hothouses.



PRACTICAL INFO

Opening hours:

1 March-31 Oct.: daily: 2 p.m.-6 p.m.
(until 7 p.m. from May to August)

2 Nov.-24 Dec.: daily: 2 p.m.-4 p.m.

Closed from 25 Dec. to 1 March
and on 1 May, 1 and 11 Nov.
May close in bad weather for safety reasons.

Free admission.

28, rue Goethe - +33 3 68 85 18 65
www.jardin-botanique.unistra.fr



POURTALÈS PARK

Located in the Robertsau quarter, the Pourtalès Park surrounds a manor of the same name. This former landscape garden is home to numerous contemporary works of art set at random along the forest paths. It also features recreational facilities, for the enjoyment of children and adults alike.

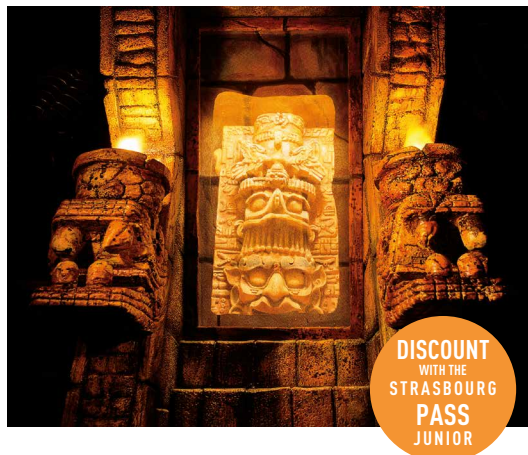


PRACTICAL INFO

Opening hours: daily, all year round

Free admission

161, rue Mélanie - Strasbourg-Robertsau



MUSEUM "LES SECRETS DU CHOCOLAT"

800 m² given entirely over to the joys of cocoa and the chocolate-making process.
3 circuits and an amphitheatre for learning everything there is to know about chocolate. Yummy!



PRACTICAL INFO

Opening hours: Tue.-Sat.: 10 a.m.-6 p.m.

(7 p.m. in July, August and December)

Sundays and public holidays: 2 p.m.-6 p.m.

In January: Wed.-Sun.: 2 p.m.-6 p.m.

Closed: Mondays and 25-26 Dec. and 1 Jan.

Reduced price: children 5-15

Free: under 5's

Rue du Pont au Péage
67118 Geispolsheim
+33 3 88 55 04 90
www.musee-du-chocolat.com

THE ORANGERIE BOWLING ALLEY

Located right in the middle of the Orangerie, the bowling alley is the ideal place to while away rainy days.

Everything caters to the family: bowling balls are especially designed for children, shoes start at European size 27 (British size 10) and 6 skittle lanes are dedicated to younger children.

EXTRA

The **CrocBowling** package:

2 games, shoe rental, 1 drink and 1 toasted ham and cheese sandwich, daily before 2 p.m. (except on Sundays and public holidays)



PRACTICAL INFO

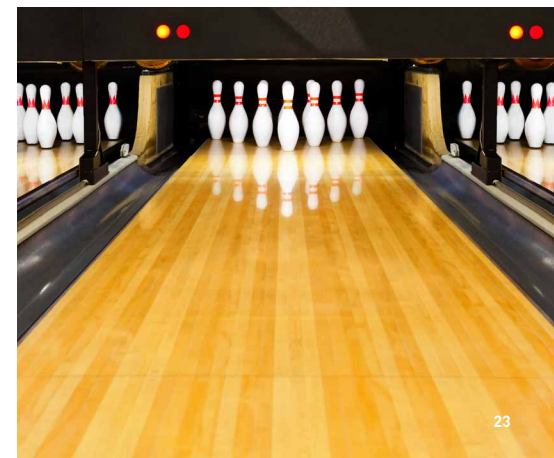
Opening hours and prices:

www.jardinorangerie.fr

Parc de l'Orangerie

+33 3 90 41 68 00 - www.jardinorangerie.fr

OVER
3'S





SWIMMING POOLS

THE MUNICIPAL SWIMMING POOLS

This pool offer a fabulous setting for indulging in the joys of swimming. Copper plumbing, marble tiles, earthenware baths, a fountain and fine panelling lend an ancient touch to the two pools.

Aquatic recreation:

On Saturdays from 2 p.m. to 5:30 p.m. and on Sundays from 8 a.m. to 1 p.m., have a safe and carefree splash in the small pool. Fun, educational equipment is even provided, so everyone have some fun in the water!



PRACTICAL INFO

Opening hours: Info at +33 3 88 25 17 58 or on the website www.strasbourg.eu

Reduced price: children aged 4 to 17
Ticket books available
10, boulevard de la Victoire



Closed for renovation until 2021.

THE WACKEN POOL

At the Wacken Pool, families are welcome all year long! There's something for everyone: athletes, "loungers", or little splashers. You can even swim outdoors in wintertime.



PRACTICAL INFO

Opening hours: Info at +33 3 88 31 49 10 or on the website www.strasbourg.eu

Reduced price: children aged 4 to 17
Ticket books available
8, rue Pierre-de-Coubertin

THE ICEBERG SKATING RINK

With two skating rinks and a total surface area of 3 300 m², it is the biggest ice-skating complex in France. Several activities are offered all year round, for adults and children.



PRACTICAL INFO

Opening hours and prices:

Info on the website www.strasbourg.eu
Rue Pierre-Nuss - Strasbourg-Cronenbourg

OVER
3'S



Throughout the year the Iceberg skating rink hosts fabulous shows on ice. The full programme is available on the website.



The most daring of you can carry on having fun at the Rotonde skate park, which is right next to the dam.



NATURA PARC

15 minutes away from Strasbourg and in the middle of an oak forest, Natura Parc is a fabulous playground for the entire family. A rope bridge, zip lines, monkey bridges and suspended walkways are just a few of the games and obstacles that have to be mastered for a real thrill. A breath of fresh air for everyone, with 9 trails. An unforgettable experience among the treetops.



PRACTICAL INFO

Opening hours from Easter to All Saints Day: Wed., Sat., Sun., public holidays and school holidays in Alsace: 1 p.m.-6 p.m. Closed from December to March.

3 hours use of park facilities with personal protective equipment

Reduced price: depending on age groups. Minors must be accompanied by an adult.
35, rue de la Nachtweid - 67540 Ostwald
+33 3 88 65 40 07 - www.naturaparc.com

OVER
3'S





FRIEDEL WILDLIFE PARK

At the heart of the Girlenhirsch recreational zone, by the banks of the Ill river, the collection at the Friedel wildlife park is unique in the Strasbourg area. Over an area of more than 2 hectares, visitors can come into direct contact with a wide variety of domestic animals, from farm and barnyard animals to aquatic species and even more exotic creatures!

Come and visit an attractive location where you can explore and observe the animal kingdom.

Suitable for all ages!



PRACTICAL INFO

Opening hours:

Wednesday, Saturday, Sunday, public holidays and school holidays.

End of March-October: 2 p.m.-6 p.m.
(7 p.m. from May to August)

Closed in winter from November to the end of March.

Free admission.

Important:

The opening of the park depends on the weather conditions.

Rue du Girlenhirsch
67540 Illkirch-Graffenstaden
+33 3 88 66 80 80
www.illkirch-graffenstaden.fr

OVER
3'S

> USEFUL AMENITIES

PUBLIC TOILETS

Parc de l'Etoile:

Daily: 24/7

Place d'Austerlitz:

Mon.-Sat.: 7 a.m.-7:30 p.m.

Sundays-public holidays: 8 a.m.-7:30 p.m.

Place du Château:

Daily: 7 a.m.-7:30 p.m.

Place Kléber:

Mon.-Sat.: 7 a.m.-7:30 p.m.

Sundays-public holidays: 8 a.m.-7:30 p.m.

Place Broglie:

Daily: 9 a.m.-8 p.m.

Quai des Pêcheurs - St-Guillaume:

Daily: 9 a.m.-6:30 p.m.

Quai Charles Altorffer:

Daily: 9 a.m.-6:30 p.m.

Barrage Vauban - Petite France:

Mon.-Sat.: 7 a.m.-7:30 p.m.

Sundays-public holidays: 8 a.m.-7:30 p.m.

Wacken - Boulevard de Dresde:

Daily: 9 a.m.-6:30 p.m.

IN THE PARKS AND GARDENS

Citadelle Park:

Daily: 9 a.m.-6:30 p.m.

Orangerie Park - bowling:

Daily: 9 a.m.-6:30 p.m.

Orangerie Park - Avenue de l'Europe:

Daily: 9 a.m.-6:30 p.m.

Two Shores Garden:

Daily: 9 a.m.-6:30 p.m. (closed in winter)

FREE LOAN OF BABY BUGGIES

To make it easier for you to get around Strasbourg with children aged 1 to 4 (18 kg max.), the Tourist Office provides baby buggies free of charge.

Daily: 9 a.m.-7 p.m.

Tourist Office: 17, place de la Cathédrale

FREE PLAYGROUNDS

Station:

On the corner of Rue Kuhn and Rue Kageneck (behind the municipal library)

Krutenau:

Place Mérian - Place des Orphelins

Petite France:

Square Louise-Weiss (with ping-pong table) - square des Moulins

République:

Parc des Contades (Tram B or E "Contades")

Orangerie:

Parc de l'Orangerie

Port du Rhin:

Jardin des Deux Rives

CAROUSELS AND OTHER GAMES

Place Gutenberg:

Carousel

Orangerie Park:

Little cars

TAKE
NOTE!

The information contained in this document is subject to change. Strasbourg Tourist Office may on no account be held responsible for schedule changes or incorrect information.



STRASBOURG PASS AND STRASBOURG PASS JUNIOR

VISITEZ PLUS, DÉPENSEZ MOINS!

> MEHR BESICHTIGEN, WENIGER AUSGEBEN!

> VISIT MORE, SPEND LESS!



DES ENTRÉES GRATUITES,
DES RÉDUCTIONS,
DES INFOS PRATIQUES

> FREIE EINTRITTE, ERMÄSSIGUNGEN, NÜTZLICHE HINWEISE
> FREE ADMISSIONS, REDUCTIONS, PRACTICAL INFORMATION

! Pour individus uniquement - Nur für Einzelpersonen - For individual persons only

Vente et information / Verkauf und
Information / Sale and information:
17, place de la Cathédrale
BP 70020
67082 STRASBOURG CEDEX

Tel +33 (0)3 88 52 28 28
Fax +33 (0)3 88 52 28 29
Ouvert tous les jours 9h-19h
Jeden Tag 9 bis 19 Uhr geöffnet
Open every day: 9 a.m. to 7 p.m.



GRATUIT ! > FREI ! > FREE !

LA MONTEE
À LA PLATEFORME
DE LA CATHÉDRALE
Aufstieg zur
Münsterplattform
Ascend to the
cathedral platform



LA BALADE
EN BATÉAU-
PROMENADE
Boat tour
durch Straßburg
Boat tour
through Strasbourg



LA VISITE
D'UN MUSÉE
AU CROIX
Besuch eines
Museums zur Wahl
Visit of one
of the museums



LA DÉCOUVERTE
DE L'HORLOGE
ASTRONOMIQUE
DE LA CATHÉDRALE
Astronomische Uhr
des Münsters
Astronomical clock
of the Cathedral



- 50%

UNE VISITE
AUDIO-GUÏÉE
DE LA VIEILLE VILLE
Tonbandführung
der Altstadt
Audio-guided
visit of the old town



LA VISITE
D'UN 2^{ème} MUSÉE
Besuch eines
zweiten Museums
Visit of a second
museum



UNE VISITE
GUIDÉE À PIED
À RÉCÉPTE
Geführter
Stadtrendgang
(je nach Programm)



LA VISITE
DU "VASEAU"
Besuch
des "Vaseau"
Visit of
the "Vaseau"



LA PROMENADE
EN MINI-TRAIN
Rundfahrt
mit dem Mini-Zug
Tour with
the mini-train



OFFICE
DE TOURISME
DE STRASBOURG
ET SA RÉGION



STRASBOURG
GRANDE ÎLE
& NEUSTADT
PATRIMOINE
MONDIAL
WORLD HERITAGE